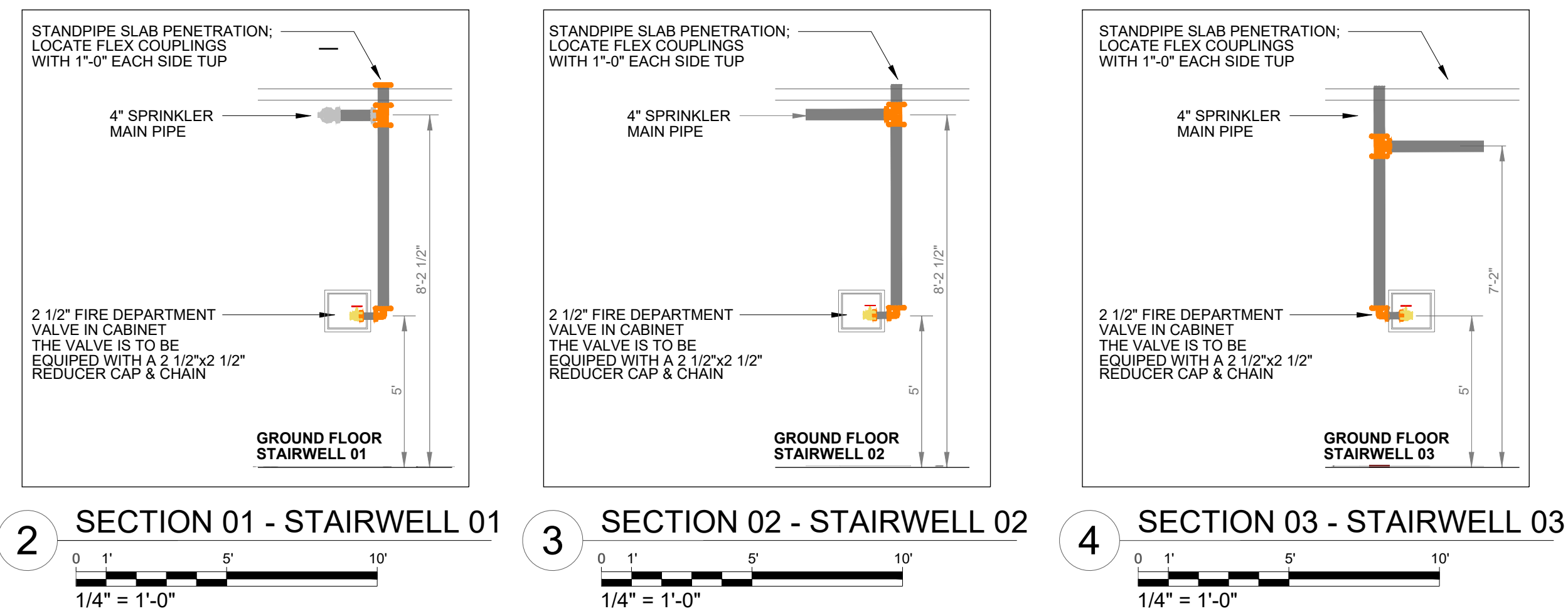


EXPOSED PIPE:
GROOVED MAINS: PIPING 2" AND SMALLER TO BE SCHEDULE 40 BLACK PIPING UTILIZING WELDED OUTLETS AND JOINED BY GROOVED FITTINGS AND COUPLINGS. PIPING 2 1/2" AND LARGER TO BE SCHEDULE 10 BLACK PIPING UTILIZING WELDED OUTLETS AND JOINED BY GROOVED FITTINGS AND COUPLINGS.
TREADED LINES:
SCHEDULE 40 BLACK PIPING UTILIZING STANDARD WIEGHT CAST IRON SCREWED FITTINGS.
CONCEALED PIPE: PIPING 3" AND SMALLER TO BE BLAZEMASTER CPVC PIPING, UTILIZING BLAZEMASTER FITTINGS AND COUPLINGS.

CISTERN NOTE:

- LOW WATER ALARM:
LOW WATER LEVEL ALARM IS REQUIRED FOR THE CISTERN.
THE ALARM SHOULD PROVIDE BOTH AUDIBLE AND VISUAL SIGNALS.
- AUTOMATIC REFILL SYSTEM:
THE CISTERN MUST BE INTEGRATED WITH AN AUTOMATIC REFILL MECHANISM.
THE SYSTEM SHOULD ACTIVATE TO REPLENISH THE TANK AS SOON AS THE WATER LEVEL FALLS BELOW THE SET THRESHOLD, ENSURING ADEQUATE WATER AVAILABILITY AT ALL TIMES.



LEGEND

- ⊗ CONCEALED PENDANT SPRINKLER
- ⊕ SIDEWALL SPRINKLER EXPOSED
- ⊙ UPRIGHT SPRINKLER EXPOSED
- ⬢ CALCULATION POINT
- CONCEALED PIPELINE
- EXPOSED PIPELINE
- UNDERGROUND PIPE
- - - REMOTE AREA BOUNDARY
- ⬢ HYDRANT LANDING VALVE
- ⬢ FIRE DEPARTMENT CONNECTION
- PIPE SLEEVE (DETAIL AT SPR-00)
- PIPE HANGER
- ⬢ FIRE PUMP - VERTICAL TURBINE
- ⬢ JOCKEY PUMP
- ⬢ DISCHARGE CHECK VALVE
- ⬢ BUTTERFLY VALVE
- ⬢ RELIEF VALVE ELBOW
- ⬢ RELIEF VALVE

FIRE DEPARTMENT CONNECTION - BOM

Size	Description	Quantity
4	Rigid Coupling, Org. E Gasket	2
4	Grooved Short Radius, 90° Elbow, DI, Org	8
4	Grooved, 90° Elbow, DI	2
4 x 2 1/2 x 2 1/2	FDC, Exposed, Two-Way, Double Clapper, PB, Back	1
4	Swing Check Valve, G-G	1

HOSE CABINET - BOM

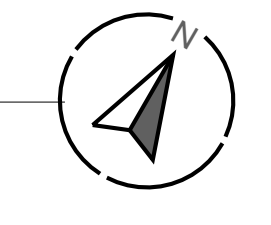
Size	Description	Quantity
2 1/2	Rigid Coupling, Org. E Gasket	2
4	Rigid Coupling, Org. E Gasket	2
2 1/2	Hose Valve, Adj. PCP, (T,F)-T(M)	1
4 x 4 x 2 1/2	Grooved Reducing Tee, DI	1
18x18x8	Valve Cabinet FR2024	1

FIRE PUMP ROOM - BOM

Size	Description	Quantity
1 1/2	Threaded 90° Elbow, GMI	3
1 1/2	Gate Valve, OS&Y, T-T, 175lb	2
1 1/2 x 6	Threaded Reducing Flange, CI	2
1 1/2	150lb Union, CI	1
1 1/2	150lb Union, GMI	1
1 1/2	Valve, T-T Swing Check	1
1 1/2	M-Threaded Square Plug, DI	1
1 1/2	Globe Valve, T-T	1
1 1/2	Threaded Straight Tee, SS	4
1 1/2 x 1 1/2 x 1 1/2	Threaded Reducing Tee, GMI	4
1 1/2	Valve, T-T Swing Check	3
1 1/2	Threaded Cap, GMI	4
1 1/2	Threaded, 90° Elbow, SS	8
1 1/2	150lb Union, GMI	2
1 1/2 x 1 1/2 x 1 1/2	Threaded Reducing Tee, GMI	1
1 1/2	Gauge	5
12 x 6	Pump, Vertical Turbine	1
4	Butterfly Valve, G-G	4
2 1/2	Swing Check Valve, G-G	4
4	Swing Check Valve, G-G	3
2	Angle Valve, T-T	1
2 1/2	Butterfly Valve, G-G	1
1 1/2	Angle Valve, T-T	1
2 1/2	Rigid Coupling, Org. E Gasket	4
2	M-Threaded Square Plug, CI	3
4	Rigid Coupling, Org. E Gasket	25
4 x 2	Waterflow Detector	3
2	Threaded, 90° Elbow, CI	3
1 1/2	Threaded, 90° Elbow, CI	1
1 1/2	Threaded, 45° Elbow, CI	1
2	Threaded, 45° Elbow, CI	3
1 1/2	M-Threaded Square Plug, CI	1
2 1/2 x 1 1/2	Waterflow Detector	1
4	Grooved Tee, DI, Org	1
6	Rigid Coupling, Org. E Gasket	7
1 1/2	Threaded Cap, CI	1
6 x 4	Rigid Coupling, Reducing, Org. E Gasket	1
1 1/2	Threaded Cap, M, Galv	1
4	Grooved, 90° Elbow, DI	4
1 1/2	Threaded Straight Tee, CI	1
6	F-Grooved, Low Pressure Flange, DI	2
4	F-Grooved, Low Pressure Flange, DI	3
6	Swing Check Valve, F-F	1
6	Grooved, 90° Elbow, DI	1
6	Grooved Tee, DI	1
6	Flanged Tee, CI	1
6	Butterfly Valve, G-G	1
	Jockey Pump	1



1 GROUND FLOOR PLAN - FIRE SPRINKLER LAYOUT
1/8" = 1'-0"



Sprinkler Legend

Symbol	Manufacturer	SIN	Model	Quantity	K-Factor	Type	Size	Response	Finish	Temperature	Note
⊗	Reliable	RA0613	RFCS8	123	5.8	Concealed Pendant	1/2"	Fast	Brass	165°F	CONCEALED
⊕	Reliable	RA1425	F1FR56	74	5.6	Upright	3/4"	Quick	ENF	175°F	INSTALLED 9" FROM CEILING
⊙	Reliable	RA1435	F1FR56	3	5.6	Horizontal Sidewall	1/2"	Quick	White Polyester	175°F	INSTALLED 9" FROM CEILING
Total = 200											

Hydraulic Information

Remote Area 02 - GROUND FLOOR	
OCCUPANCY CLASSIFICATION	Ordinary Group 1 (NFPA13-4.3.2)
DENSITY (gpm/ft²)	0.15 for 1500ft² (Actual 1500ft²)
TOTAL HEADS FLOWING	12
K-FACTOR	5.8
TOTAL WATER REQUIRED	282.56
TOTAL PRESSURE REQUIRED	155.133
BASE OF RISER (ppm)	282.56
BASE OF RISER (psi)	155.133
SAFETY MARGIN (psi)	+21.863 (12.4%)
AREA OF APPLICATION (ft²)	1500ft²
HOSE STREAM DEMAND (gpm)	250

PROJECT: _____ SHEET DESCRIPTION: GROUND FLOOR PLAN - FIRE SPRINKLER LAYOUT

DATE: _____ SHEET NO. OF TOTAL SHEETS: 4 OF 5

SCALE: 1/8" = 1'-0"

GENERAL CONTRACTOR: _____

FIRE SPRINKLER CONTRACTOR: _____

JOB NUMBER: _____

SHEET: SPR-01

FABRICATION NOTES: WET PIPING

EXPOSED PIPE:
GROOVED MAINS: PIPING 2" AND SMALLER TO BE SCHEDULE 40 BLACK PIPING UTILIZING WELDED OUTLETS AND JOINED BY GROOVED FITTINGS AND COUPLINGS. PIPING 2.1/2" AND LARGER TO BE SCHEDULE 10 BLACK PIPING UTILIZING WELDED OUTLETS AND JOINED BY GROOVED FITTINGS AND COUPLINGS.
TREADED LINES:
SCHEDULE 40 BLACK PIPING UTILIZING STANDARD WIEGHT CAST IRON SCREWED FITTINGS.
CONCEALED PIPE: PIPING 3" AND SMALLER TO BE BLAZEMASTER CPVC PIPING, UTILIZING BLAZEMASTER FITTINGS AND COUPLINGS.

LEGEND	
	CONCEALED PENDANT SPRINKLER
	SIDEWALL SPRINKLER EXPOSED
	UPRIGHT SPRINKLER EXPOSED
	CALCULATION POINT
	CONCEALED PIPELINE
	EXPOSED PIPELINE
	UNDERGROUND PIPE
	REMOTE AREA BOUNDARY
	HYDRANT LANDING VALVE
	FIRE DEPARTMENT CONNECTION
	PIPE SLEEVE (DETAIL AT SPR-00)
	PIPE HANGER
	FIRE PUMP - VERTICAL TURBINE
	JOCKEY PUMP
	DISCHARGE CHECK VALVE
	BUTTERFLY VALVE
	RELIEF VALVE ELBOW
	RELIEF VALVE



HYDRANT - BOM		
Size	Description	Quantity
6	Gate Valve, NRS, MJ-MJ	3
6	Threaded, 90° Elbow, CI	3
1 x 1/2	Slip-On Plastic Reducer Coupling, CPVC	1
4	Fire Hydrant, Two Outlet	3

REV	DATE	COMMENTS
1		
2		
3		
4		
5		

PROJECT: _____

GENERAL CONTRACTOR: _____

FIRE SPRINKLER CONTRACTOR: _____

JOB NUMBER: _____

SHEET: SPR-02

SHEET DESCRIPTION: GROUND FLOOR PLAN - UNDERGROUND PIPELINE - FIRE SPRINKLER LAYOUT

DATE: _____

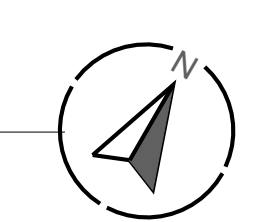
APPROVED BY: _____

DATE: _____

SCALE: 1/8" = 1'-0"

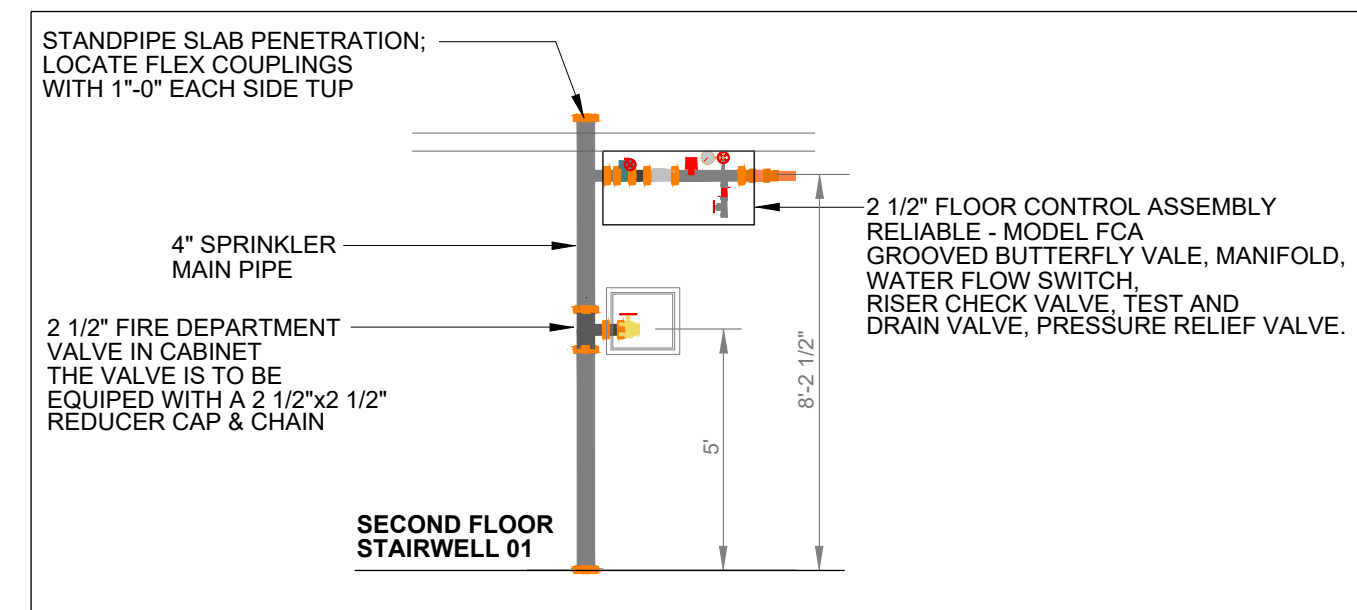
SHEET 1 OF 1

CAD FILE NAME: _____

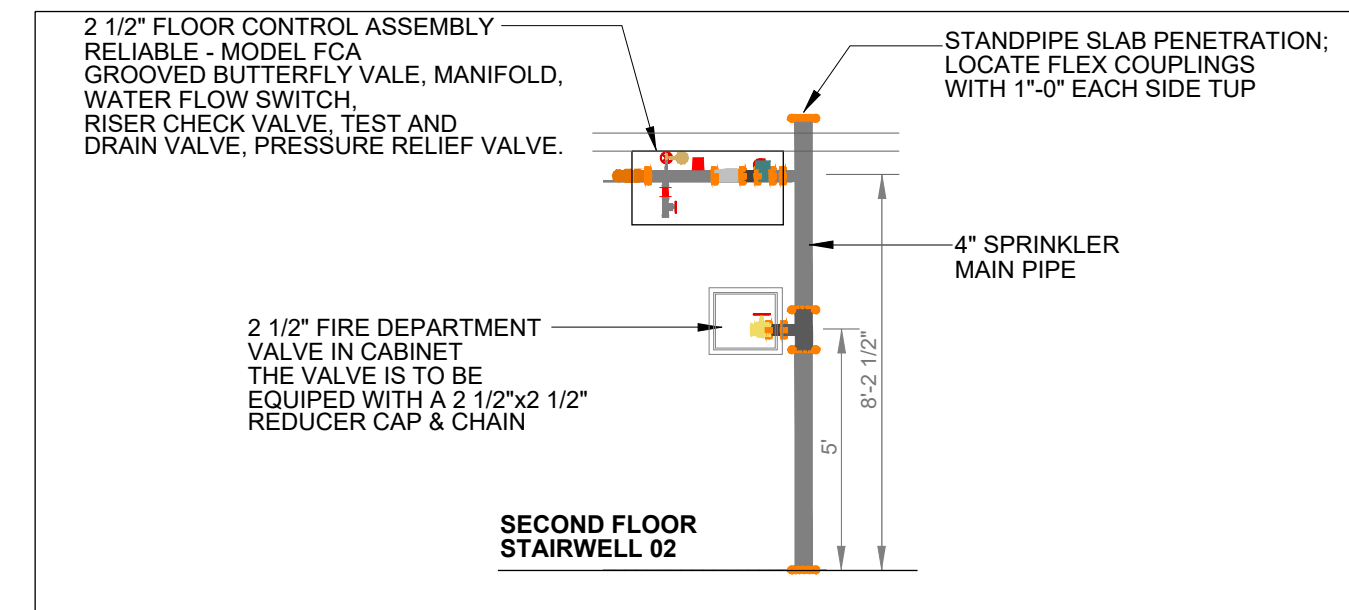
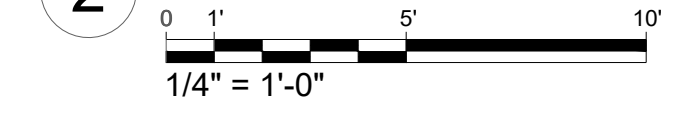


EXPOSED PIPE:
GROOVED MAINS: PIPING 2" AND SMALLER TO BE SCHEDULE 40 BLACK PIPING UTILIZING WELDED OUTLETS AND JOINED BY GROOVED FITTINGS AND COUPLINGS. PIPING 2.1/2" AND LARGER TO BE SCHEDULE 10 BLACK PIPING UTILIZING WELDED OUTLETS AND JOINED BY GROOVED FITTINGS AND COUPLINGS.
TREADED LINES:
SCHEDULE 40 BLACK PIPING UTILIZING STANDARD WIEGHT CAST IRON SCREWED FITTINGS.
CONCEALED PIPE: PIPING 3" AND SMALLER TO BE BLAZEMASTER CPVC PIPING, UTILIZING BLAZEMASTER FITTINGS AND COUPLINGS.

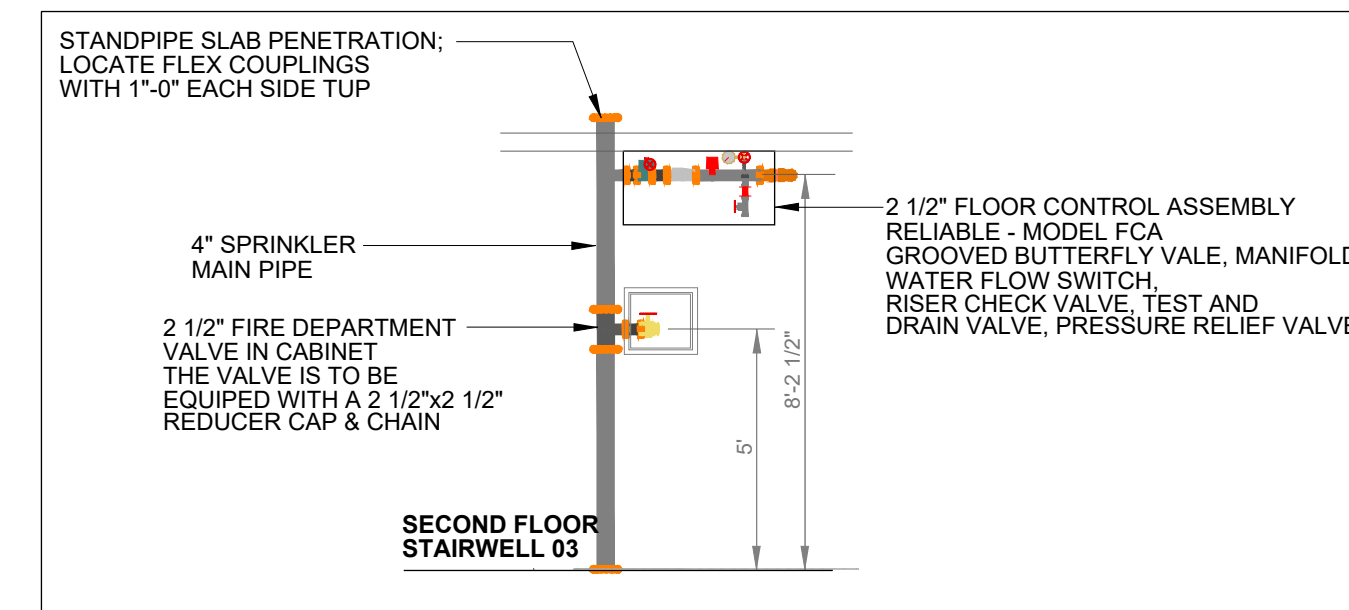
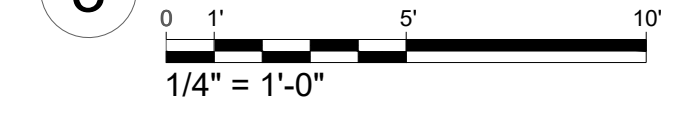
LEGEND	
	CONCEALED PENDANT SPRINKLER
	SIDEWALL SPRINKLER EXPOSED
	UPRIGHT SPRINKLER EXPOSED
	CALCULATION POINT
	CONCEALED PIPELINE
	EXPOSED PIPELINE
	UNDERGROUND PIPE
	REMOTE AREA BOUNDARY
	HYDRANT LANDING VALVE
	FIRE DEPARTMENT CONNECTION
	PIPE SLEEVE (DETAIL AT SPR-00)
	PIPE HANGER
	FIRE PUMP - VERTICAL TURBINE
	JOCKEY PUMP
	DISCHARGE CHECK VALVE
	BUTTERFLY VALVE
	RELIEF VALVE ELBOW
	RELIEF VALVE



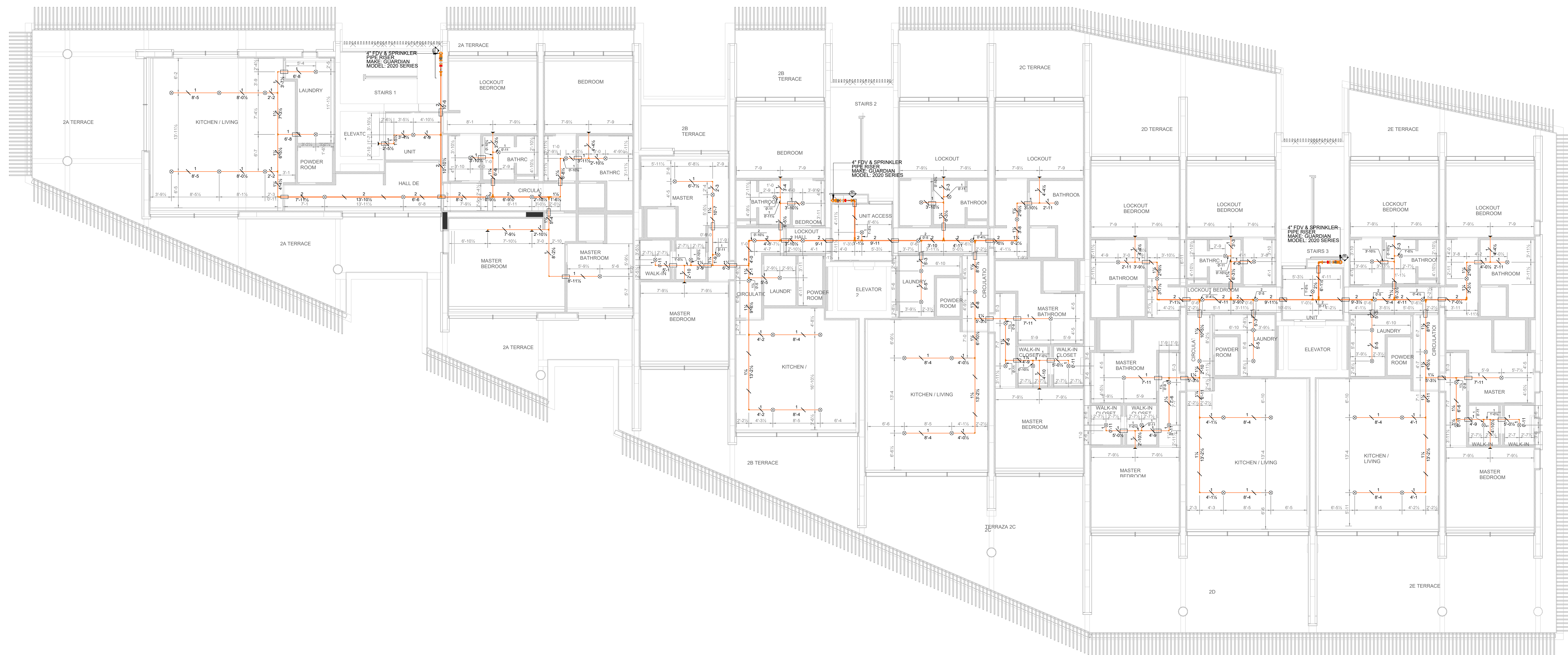
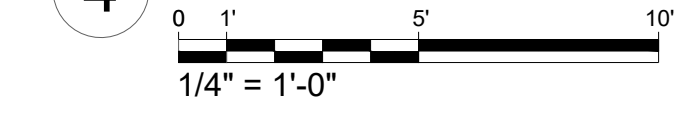
2 SECTION 01 - STAIRWELL 01



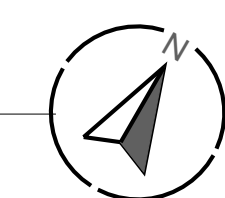
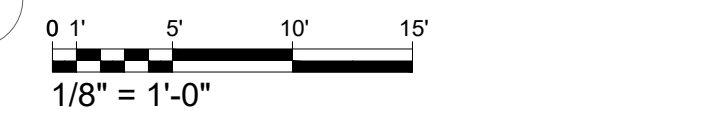
3 SECTION 02 - STAIRWELL 02



4 SECTION 03 - STAIRWELL 03



1 SECOND FLOOR PLAN - FIRE SPRINKLER LAYOUT



Sprinkler Legend											
Symbol	Manufacturer	SIN	Model	Quantity	K-Factor	Type	Size	Response	Finish	Temperature	Note
	Reliable	RA0613	RFC58	89	5.8	Concealed Pendant	1/2"	Fast	Brass	165°F	CONCEALED
	Reliable	RA1435	F1FR56	16	5.6	Horizontal Sidewall	3/4"	Quick	White Polyester	175°F	INSTALLED 5" FROM CEILING
				Total = 105							

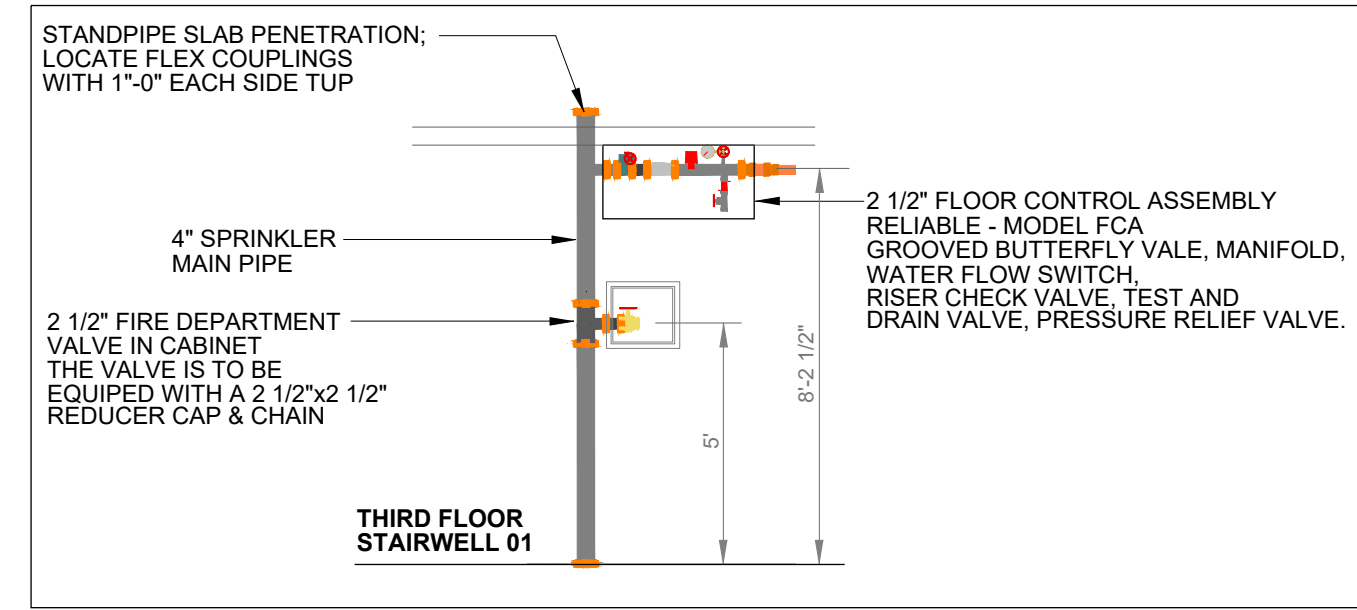
REV	DATE	COMMENTS	APPROVED BY	DATE
1				
2				
3				
4				
5				

PROJECT:	
GENERAL CONTRACTOR:	
FIRE SPRINKLER CONTRACTOR:	
JOB NUMBER:	
SHEET:	SPR-03

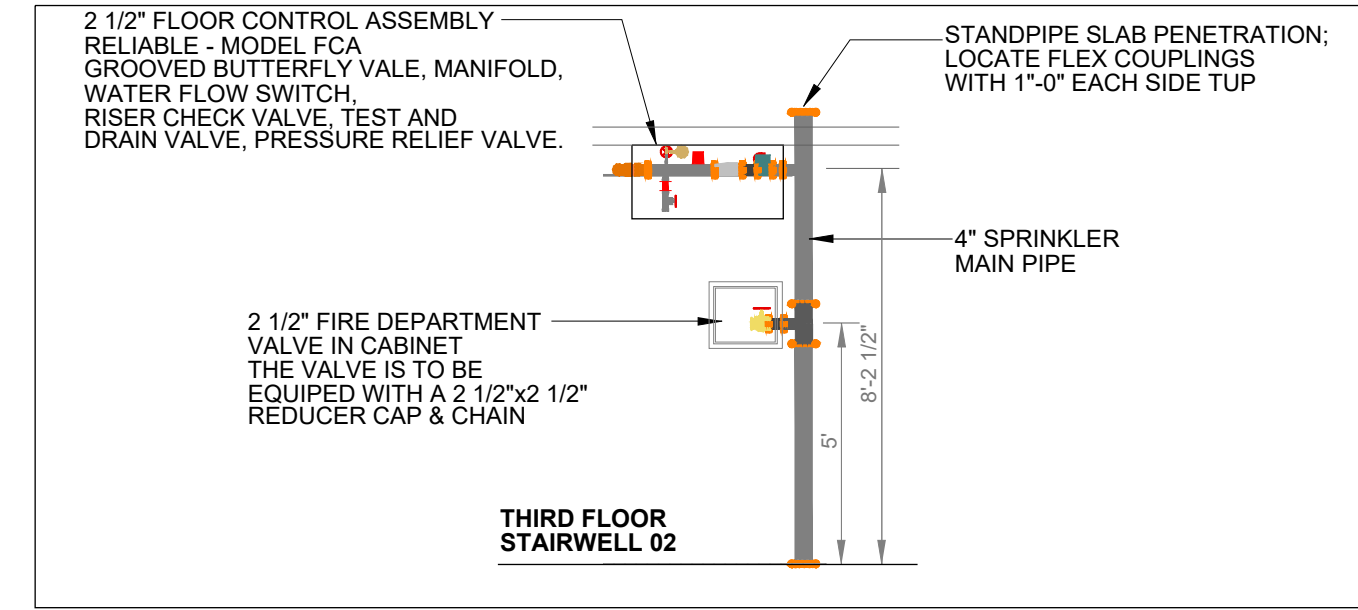
EXPOSED PIPE:
GROOVED MAINS: PIPING 2" AND SMALLER TO BE SCHEDULE 40 BLACK PIPING UTILIZING WELDED OUTLETS AND JOINED BY GROOVED FITTINGS AND COUPLINGS. PIPING 2.1/2" AND LARGER TO BE SCHEDULE 10 BLACK PIPING UTILIZING WELDED OUTLETS AND JOINED BY GROOVED FITTINGS AND COUPLINGS.

TREADED LINES:
SCHEDULE 40 BLACK PIPING UTILIZING STANDARD WIEGHT CAST IRON SCREWED FITTINGS.
CONCEALED PIPE: PIPING 3" AND SMALLER TO BE BLAZEMASTER CPVC PIPING, UTILIZING BLAZEMASTER FITTINGS AND COUPLINGS.

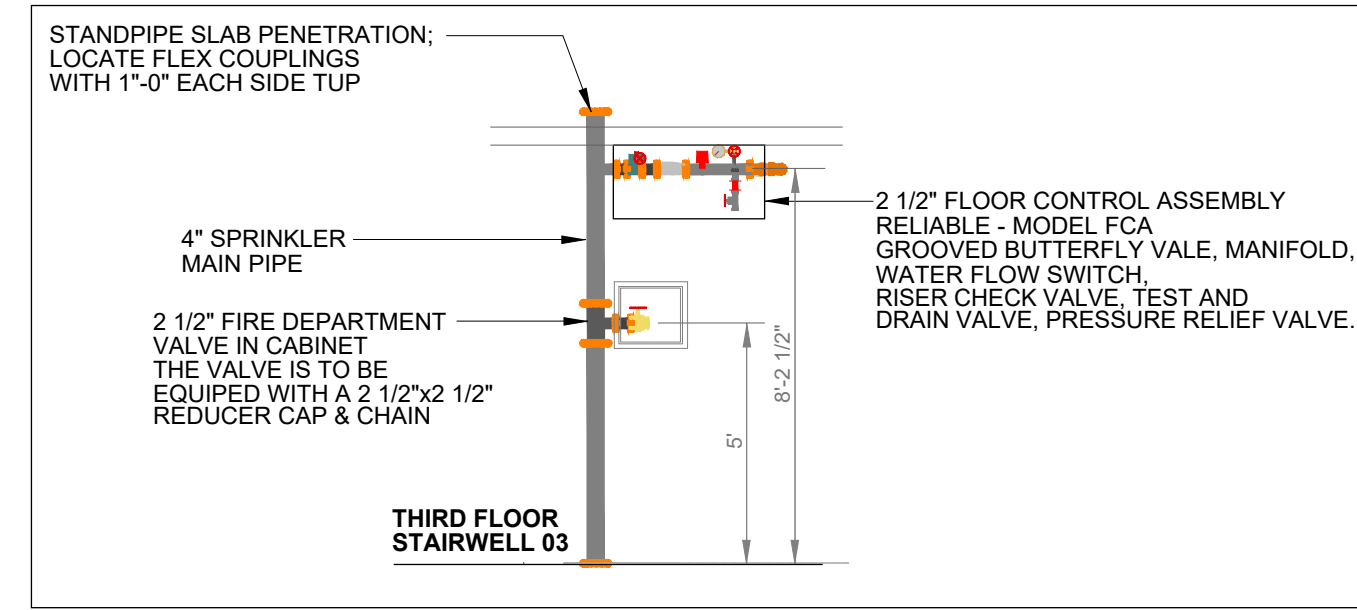
LEGEND	
	CONCEALED PENDANT SPRINKLER
	SIDEWALL SPRINKLER EXPOSED
	UPRIGHT SPRINKLER EXPOSED
	CALCULATION POINT
	CONCEALED PIPELINE
	EXPOSED PIPELINE
	UNDERGROUND PIPE
	REMOTE AREA BOUNDARY
	HYDRANT LANDING VALVE
	FIRE DEPARTMENT CONNECTION
	PIPE SLEEVE (DETAIL AT SPR-00)
	PIPE HANGER
	FIRE PUMP - VERTICAL TURBINE
	JOCKEY PUMP
	DISCHARGE CHECK VALVE
	BUTTERFLY VALVE
	RELIEF VALVE ELBOW
	RELIEF VALVE



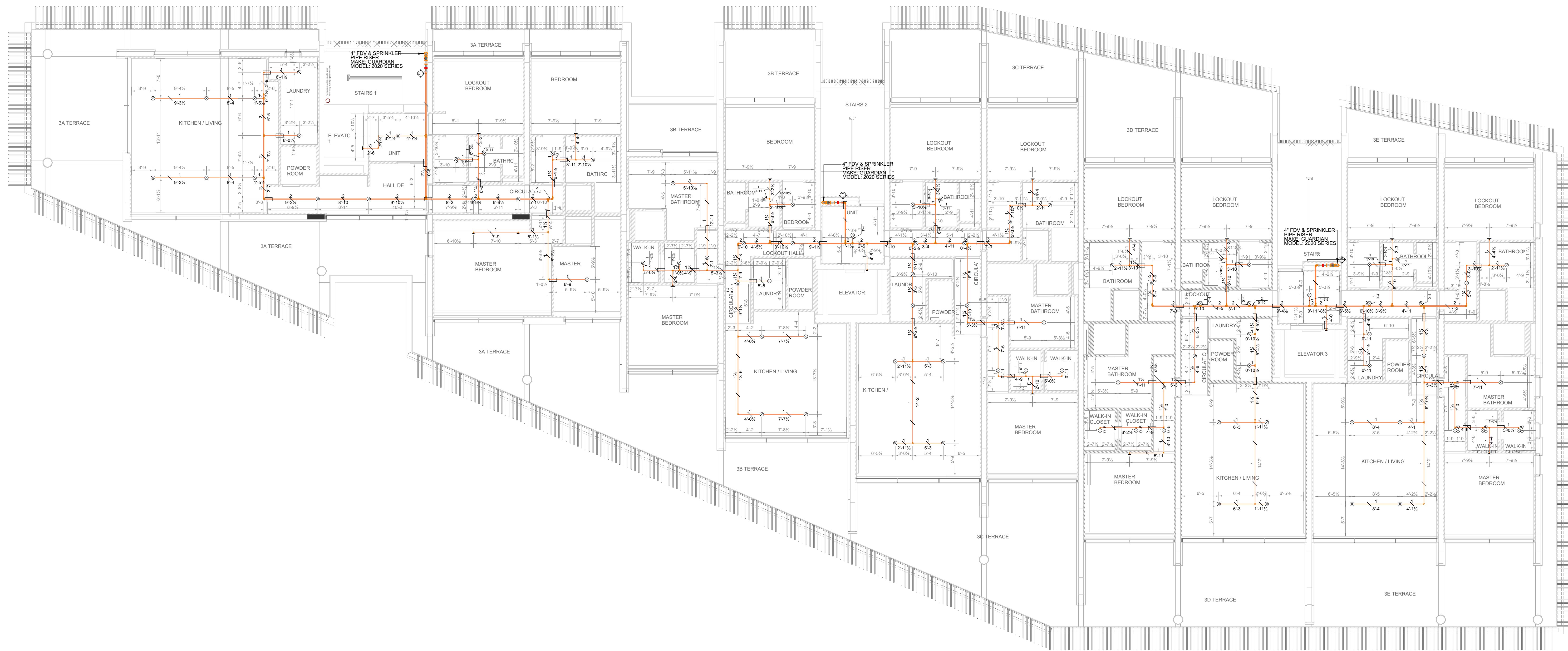
2 SECTION 01 - STAIRWELL 01
0 1' 5' 10'
1/4" = 1'-0"



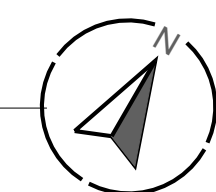
3 SECTION 02 - STAIRWELL 02
0 1' 5' 10'
1/4" = 1'-0"



4 SECTION 03 - STAIRWELL 03
0 1' 5' 10'
1/4" = 1'-0"



1 THIRD FLOOR PLAN - FIRE SPRINKLER LAYOUT
0 1' 5' 10'
1/8" = 1'-0"



Sprinkler Legend											
Symbol	Manufacturer	SIN	Model	Quantity	K-Factor	Type	Size	Response	Finish	Temperature	Note
	Reliable	RA0613	RFC58	88	5.8	Concealed Pendant	1/2"	Fast	Brass	165°F	CONCEALED
	Reliable	RA1435	F1FR56	16	5.6	Horizontal Sidewall	3/4"	Quick	White Polyester	175°F	INSTALLED 5" FROM CEILING
				Total =	104						

NO.	DATE	COMMENTS	APPROVED BY:	DATE
1				
2				
3				
4				
5				

PROJECT: _____

GENERAL CONTRACTOR: _____

FIRE SPRINKLER CONTRACTOR: _____

JOB NUMBER: _____

SHEET: _____

SHEET DESCRIPTION: THIRD FLOOR PLAN - FIRE SPRINKLER LAYOUT

SCALE: 1/8" = 1'-0"

SHEET NO. 8

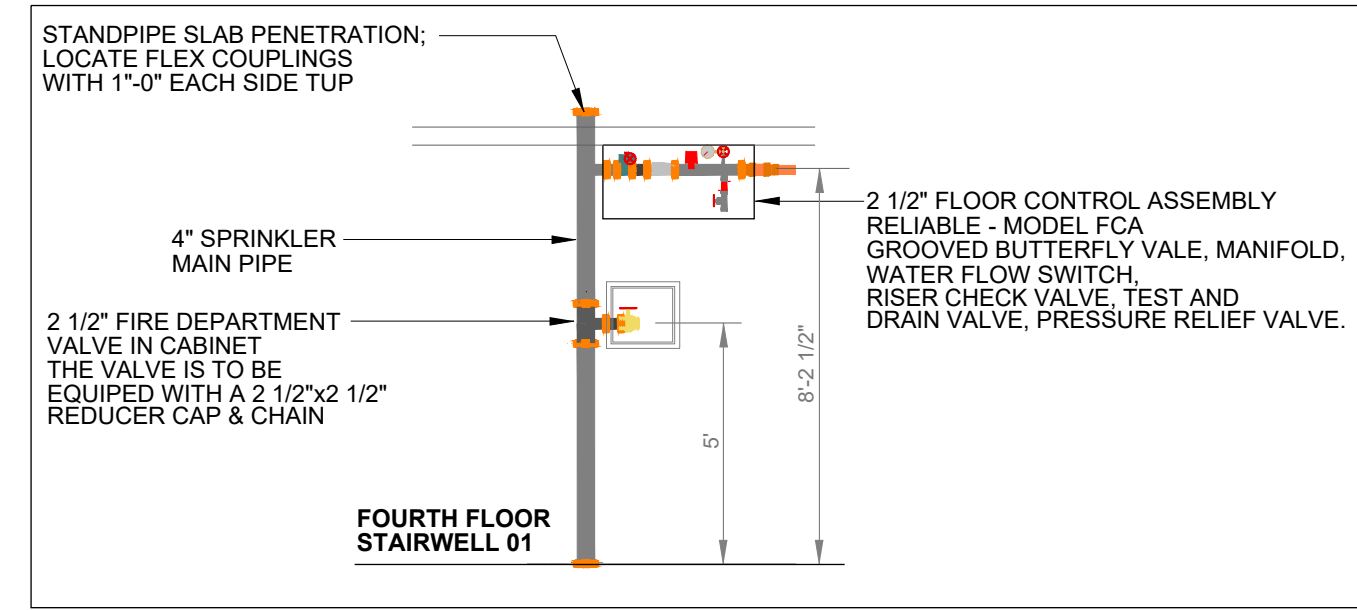
CAD FILE NAME: _____

SPR-04

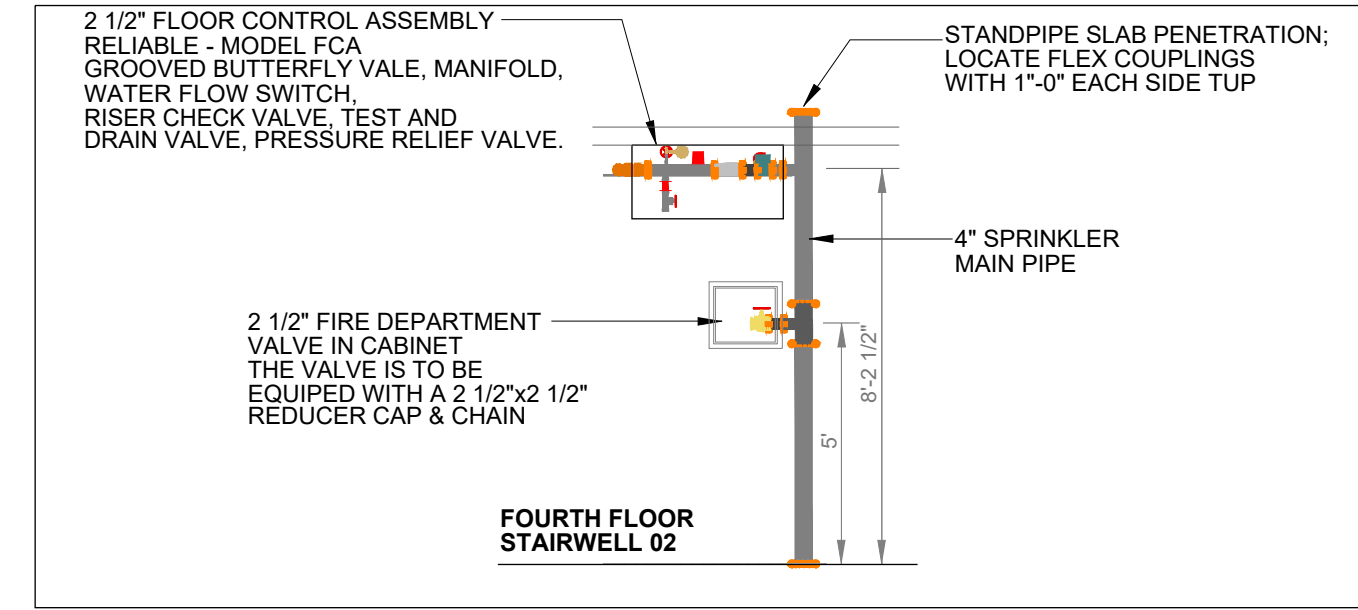
EXPOSED PIPE:
GROOVED MAINS: PIPING 2" AND SMALLER TO BE SCHEDULE 40 BLACK PIPING UTILIZING WELDED OUTLETS AND JOINED BY GROOVED FITTINGS AND COUPLINGS. PIPING 2.1/2" AND LARGER TO BE SCHEDULE 10 BLACK PIPING UTILIZING WELDED OUTLETS AND JOINED BY GROOVED FITTINGS AND COUPLINGS.

TREADED LINES:
SCHEDULE 40 BLACK PIPING UTILIZING STANDARD WIEGHT CAST IRON SCREWED FITTINGS.

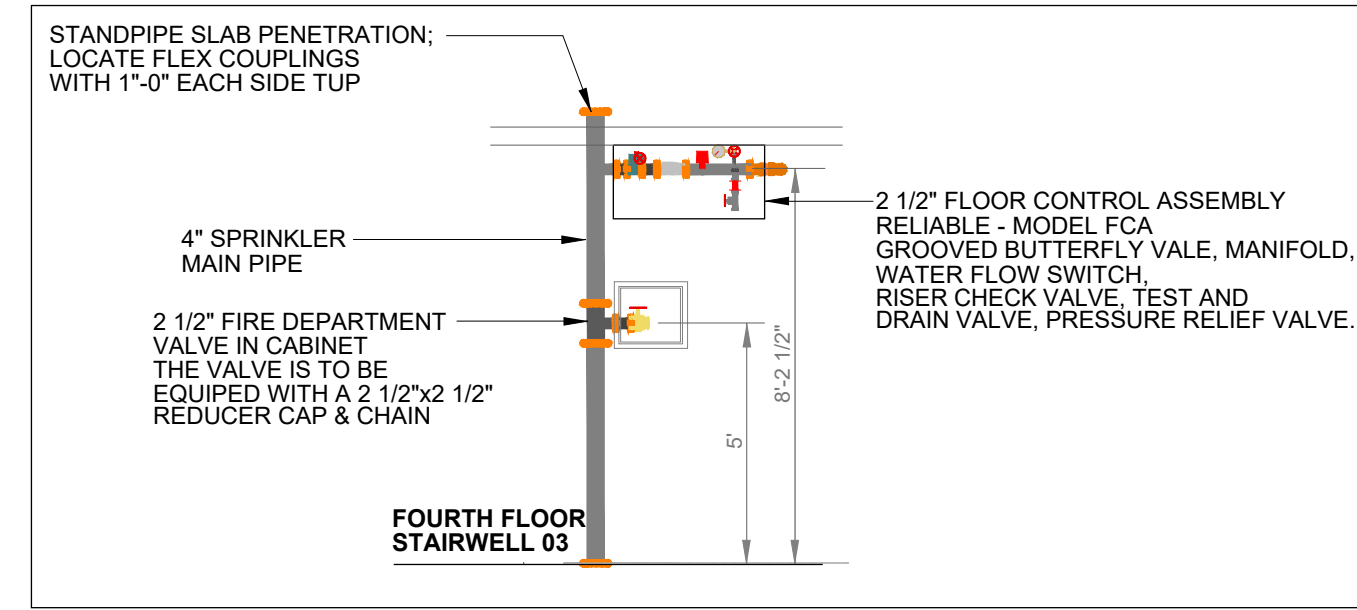
CONCEALED PIPE: PIPING 3" AND SMALLER TO BE BLAZEMASTER CPVC PIPING, UTILIZING BLAZEMASTER FITTINGS AND COUPLINGS.



2 SECTION 01 - STAIRWELL 01
0 1' 5' 10'
1/4" = 1'-0"

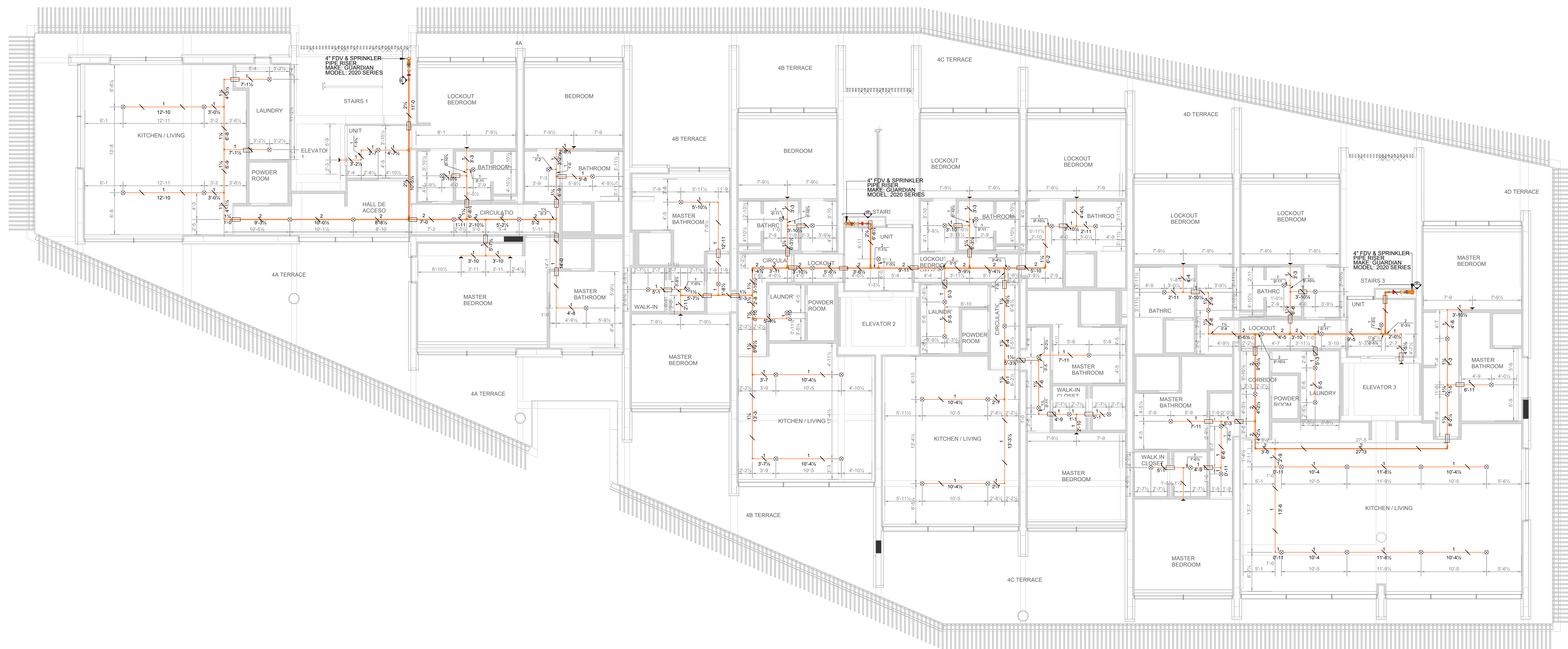


3 SECTION 02 - STAIRWELL 02
0 1' 5' 10'
1/4" = 1'-0"

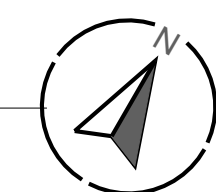


4 SECTION 03 - STAIRWELL 03
0 1' 5' 10'
1/4" = 1'-0"

LEGEND	
⊗	CONCEALED PENDANT SPRINKLER
▲	SIDEWALL SPRINKLER EXPOSED
●	UPRIGHT SPRINKLER EXPOSED
●	CALCULATION POINT
—	CONCEALED PIPELINE
—	EXPOSED PIPELINE
—	UNDERGROUND PIPE
- - -	REMOTE AREA BOUNDARY
◆	HYDRANT LANDING VALVE
■	FIRE DEPARTMENT CONNECTION
□	PIPE SLEEVE (DETAIL AT SPR-00)
—	PIPE HANGER
●	FIRE PUMP - VERTICAL TURBINE
■	JOCKEY PUMP
■	DISCHARGE CHECK VALVE
■	BUTTERFLY VALVE
●	RELIEF VALVE ELBOW
●	RELIEF VALVE



1 FOURTH FLOOR PLAN - FIRE SPRINKLER LAYOUT
0 1' 5' 10'
1/8" = 1'-0"



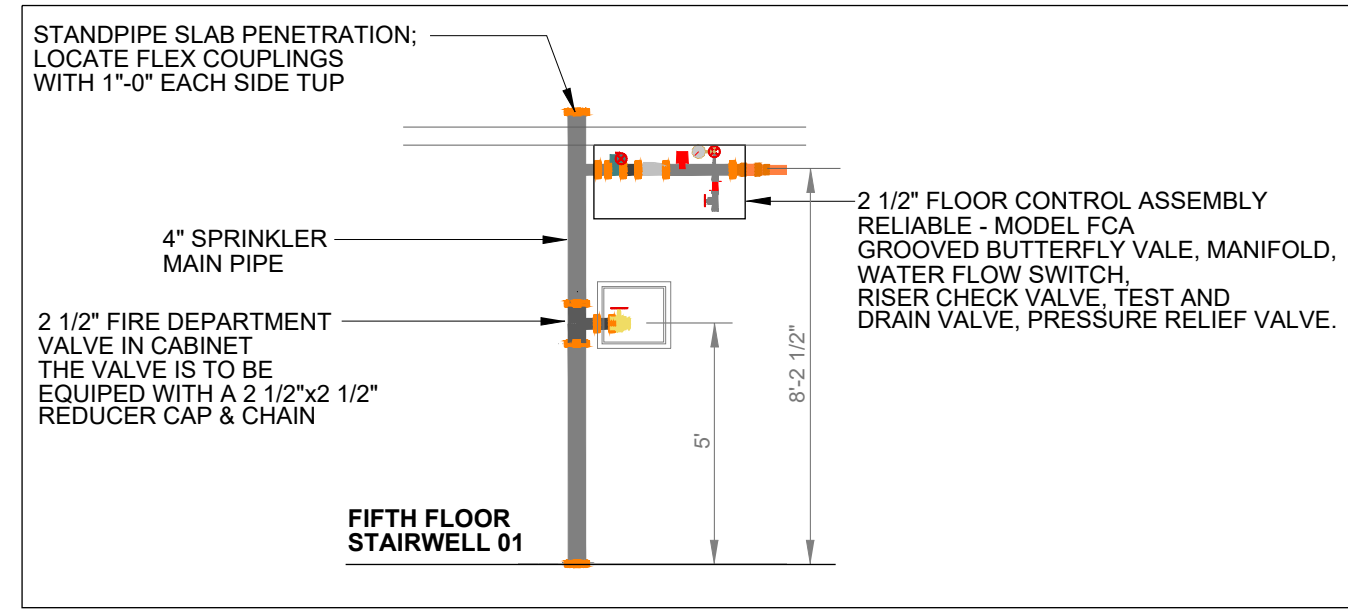
Sprinkler Legend											
Symbol	Manufacturer	SIN	Model	Quantity	K-Factor	Type	Size	Response	Finish	Temperature	Note
⊗	Reliable	RA0613	RFC58	75	5.8	Concealed Pendant	1/2"	Fast	Brass	165°F	CONCEALED
▲	Reliable	RA1435	F1FR56	15	5.8	Horizontal Sidewall	3/4"	Quick	White Polyester	175°F	INSTALLED 5" FROM CEILING
				Total = 90							

NO.	DATE	REVISION	BY	DATE	DATE	DATE
1						
2						
3						
4						
5						

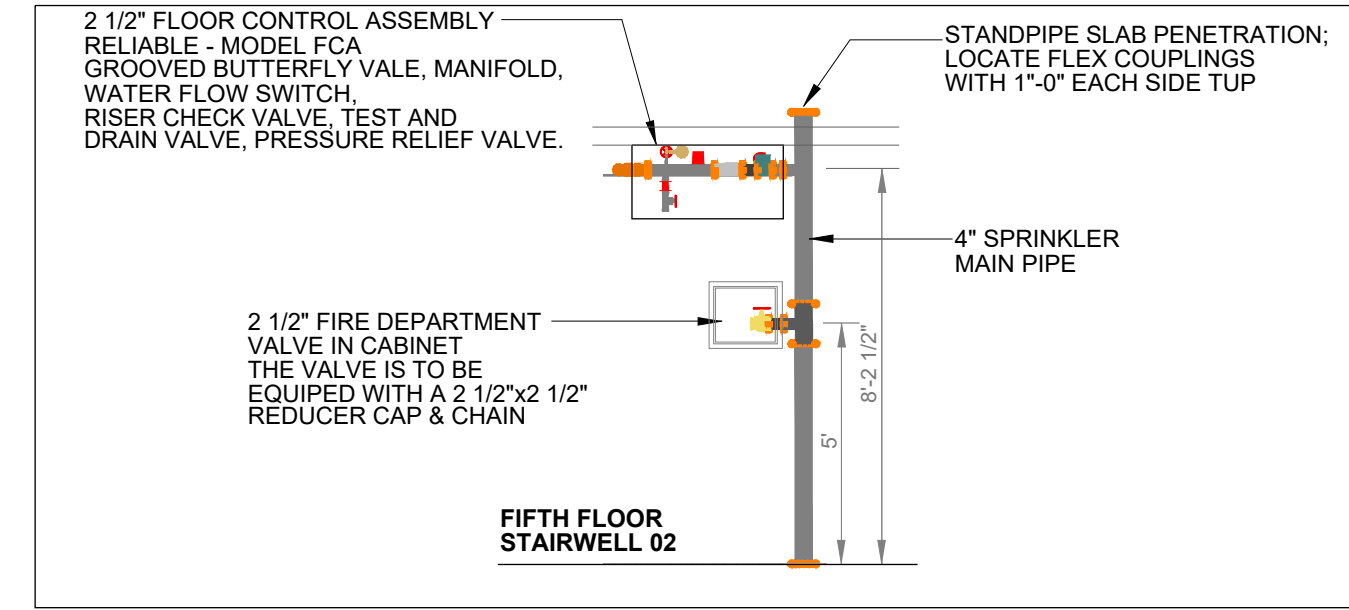
PROJECT:	FOURTH FLOOR PLAN - FIRE SPRINKLER LAYOUT
GENERAL CONTRACTOR:	
FIRE SPRINKLER CONTRACTOR:	
JOB NUMBER:	
SHEET:	SPR-05

EXPOSED PIPE:
GROOVED MAINS: PIPING 2" AND SMALLER TO BE SCHEDULE 40 BLACK PIPING UTILIZING WELDED OUTLETS AND JOINED BY GROOVED FITTINGS AND COUPLINGS. PIPING 2.1/2" AND LARGER TO BE SCHEDULE 10 BLACK PIPING UTILIZING WELDED OUTLETS AND JOINED BY GROOVED FITTINGS AND COUPLINGS.
TREADED LINES:
SCHEDULE 40 BLACK PIPING UTILIZING STANDARD WIEGHT CAST IRON SCREWED FITTINGS.
CONCEALED PIPE: PIPING 3" AND SMALLER TO BE BLAZEMASTER CPVC PIPING, UTILIZING BLAZEMASTER FITTINGS AND COUPLINGS.

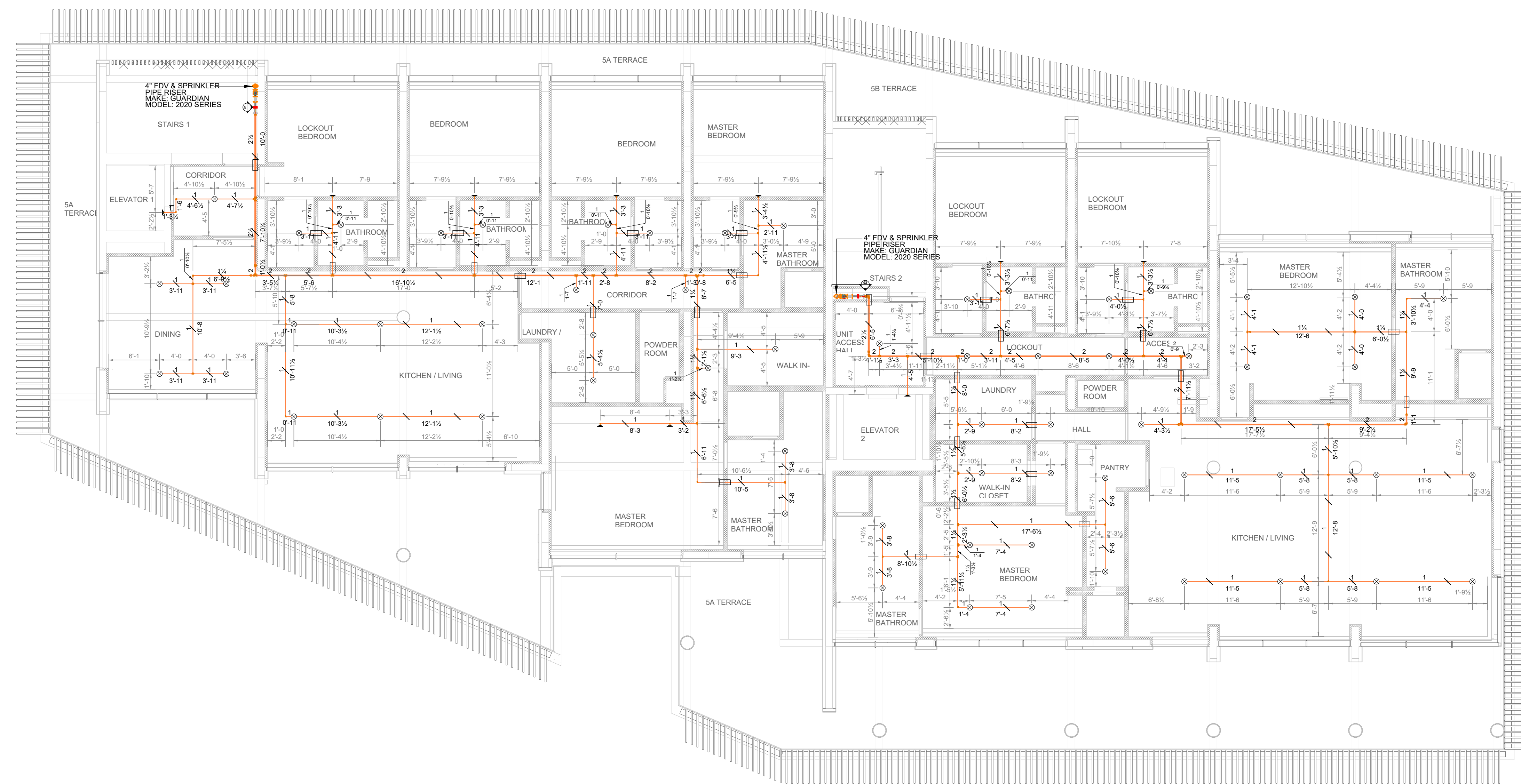
LEGEND	
	CONCEALED PENDANT SPRINKLER
	SIDEWALL SPRINKLER EXPOSED
	UPRIGHT SPRINKLER EXPOSED
	CALCULATION POINT
	CONCEALED PIPELINE
	EXPOSED PIPELINE
	UNDERGROUND PIPE
	REMOTE AREA BOUNDARY
	HYDRANT LANDING VALVE
	FIRE DEPARTMENT CONNECTION
	PIPE SLEEVE (DETAIL AT SPR-00)
	PIPE HANGER
	FIRE PUMP - VERTICAL TURBINE
	JOCKEY PUMP
	DISCHARGE CHECK VALVE
	BUTTERFLY VALVE
	RELIEF VALVE ELBOW
	RELIEF VALVE



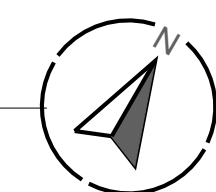
2 SECTION 01 - STAIRWELL 01
1/4" = 1'-0"



3 SECTION 02 - STAIRWELL 02
1/4" = 1'-0"



1 FIFTH FLOOR PLAN - FIRE SPRINKLER LAYOUT
1/8" = 1'-0"

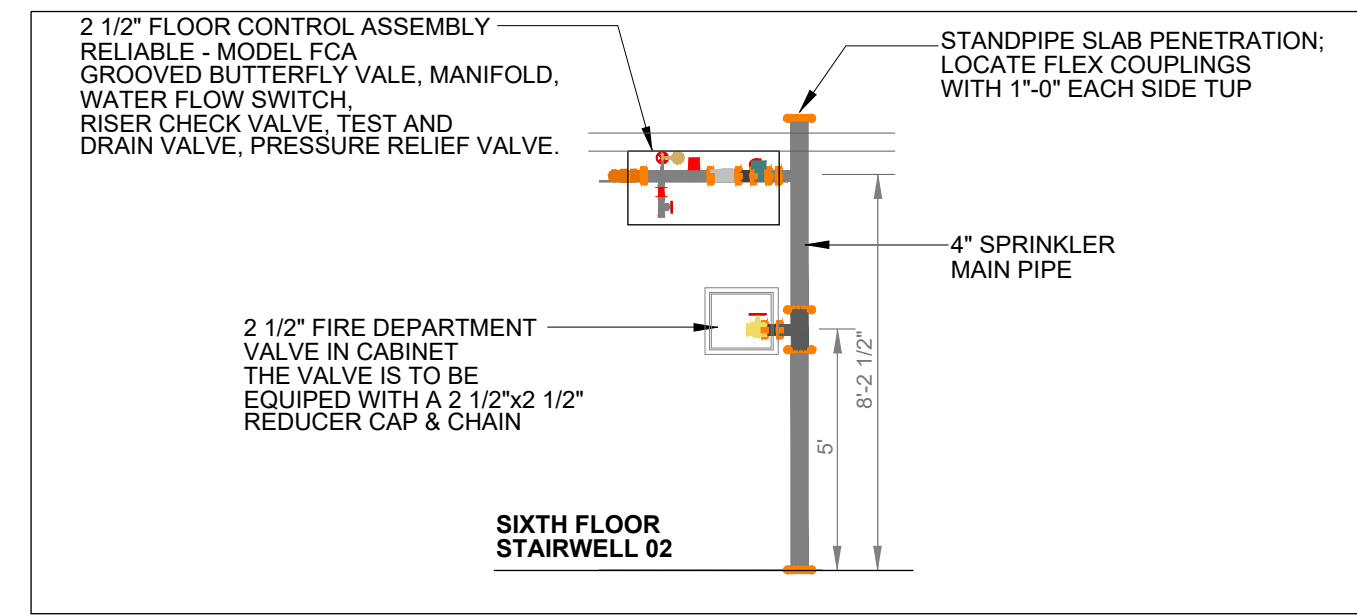


Sprinkler Legend											
Symbol	Manufacturer	SIN	Model	Quantity	K-Factor	Type	Size	Response	Finish	Temperature	Note
	Reliable	RA1435	F1FR56	10	5.6	Horizontal Sidewall	1/2"	Quick	White Polyester	175°F	INSTALLED 6" FROM CEILING
	Reliable	RA6613	RFCS8	62	5.8	Concealed Pendant	3/4"	Fast	Brass	165°F	CONCEALED
				Total = 72							

DATE	REVISION	COMMENTS
	1	
	2	
	3	
	4	
	5	

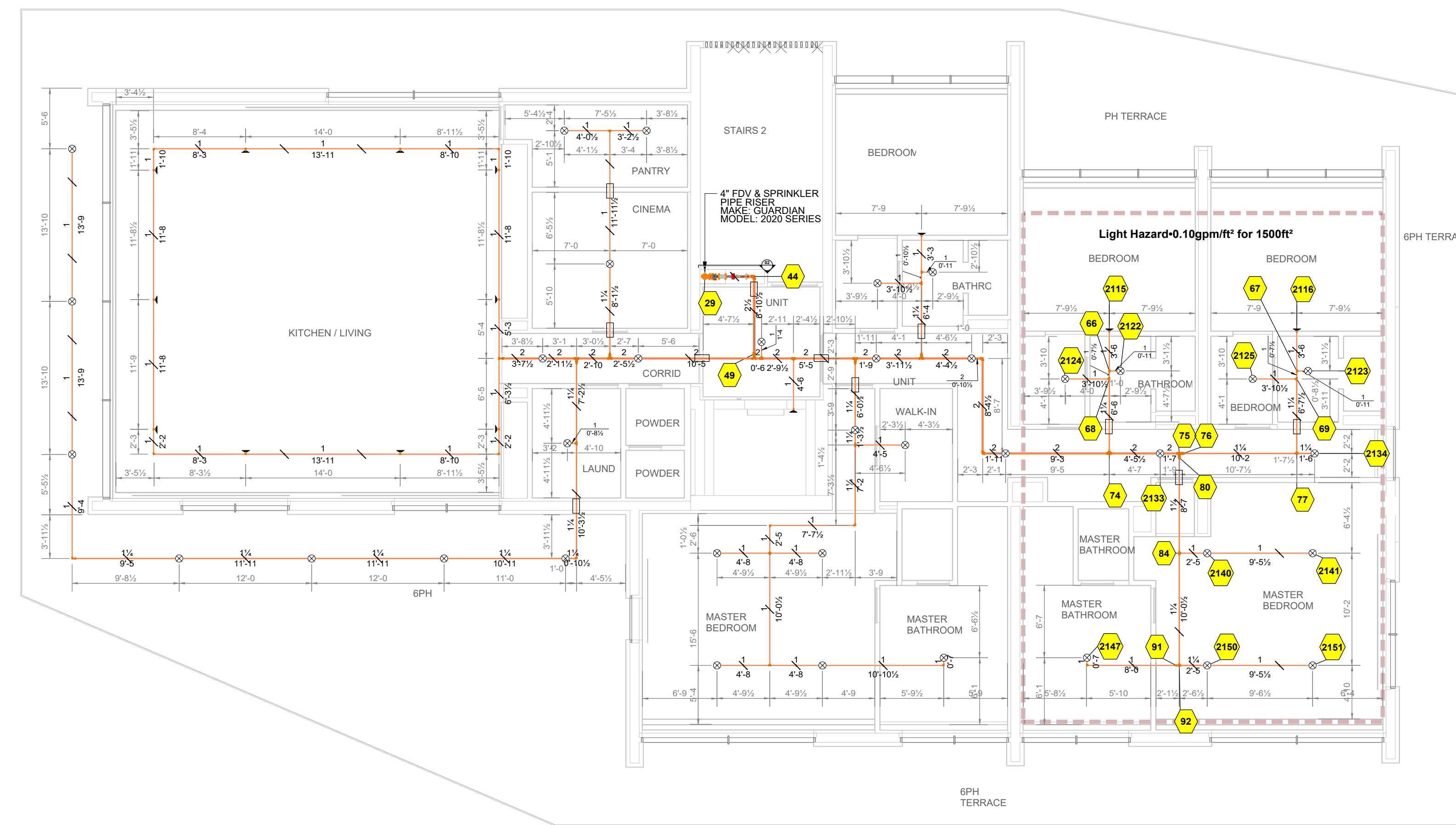
PROJECT:	
GENERAL CONTRACTOR:	
FIRE SPRINKLER CONTRACTOR:	
JOB NUMBER:	
SHEET:	

EXPOSED PIPE:
GROOVED MAINS: PIPING 2" AND SMALLER TO BE SCHEDULE 40 BLACK PIPING UTILIZING WELDED OUTLETS AND JOINED BY GROOVED FITTINGS AND COUPLINGS. PIPING 2 1/2" AND LARGER TO BE SCHEDULE 10 BLACK PIPING UTILIZING WELDED OUTLETS AND JOINED BY GROOVED FITTINGS AND COUPLINGS.
TREADED LINES:
SCHEDULE 40 BLACK PIPING UTILIZING STANDARD WIEGHT CAST IRON SCREWED FITTINGS.
CONCEALED PIPE: PIPING 3" AND SMALLER TO BE BLAZEMASTER CPVC PIPING, UTILIZING BLAZEMASTER FITTINGS AND COUPLINGS.

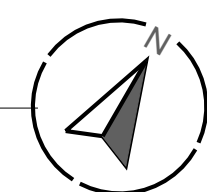


2 SECTION 01 - STAIRWELL 01
0 1' 5' 10'
1/4" = 1'-0"

LEGEND	
⊗	CONCEALED PENDANT SPRINKLER
▲	SIDEWALL SPRINKLER EXPOSED
●	UPRIGHT SPRINKLER EXPOSED
⬢	CALCULATION POINT
—	CONCEALED PIPELINE
—	EXPOSED PIPELINE
—	UNDERGROUND PIPE
- - -	REMOTE AREA BOUNDARY
◆	HYDRANT LANDING VALVE
⊠	FIRE DEPARTMENT CONNECTION
□	PIPE SLEEVE (DETAIL AT SPR-00)
—	PIPE HANGER
⊕	FIRE PUMP - VERTICAL TURBINE
⊖	JOCKEY PUMP
⊞	DISCHARGE CHECK VALVE
⊟	BUTTERFLY VALVE
⊠	RELIEF VALVE ELBOW
⊡	RELIEF VALVE



1 SIXTH FLOOR PLAN - FIRE SPRINKLER LAYOUT
0 1' 5' 10'
1/8" = 1'-0"



Sprinkler Legend											
Symbol	Manufacturer	SIN	Model	Quantity	K-Factor	Type	Size	Response	Finish	Temperature	Note
▲	Reliable	RA1435	F1FR56	14	5.8	Horizontal Sidewall	1/2"	Quick	White Polyester	175°F	INSTALLED 6" FROM CEILING
⊗	Reliable	RA6613	RFCS8	37	5.8	Concealed Pendant	1/2"	Fast	Brass	165°F	CONCEALED
				Total = 51							

Hydraulic Information	
Remote Area 01 - SIXTH FLOOR	
OCCUPANCY CLASSIFICATION	Light Hazard (NFPA13-4.3.2)
DENSITY (gpm/ft²)	0.10 for 1500ft² (Actual 1500ft²)
TOTAL HEADS FLOWING	13
K-FACTOR	5.8
TOTAL WATER REQUIRED	221.90 gpm
TOTAL PRESSURE REQUIRED	90.892 psi
BASE OF RISER (gpm)	221.90
BASE OF RISER (psi)	90.892
SAFETY MARGIN (psi)	+67.148 (68.9%)
AREA OF APPLICATION (ft²)	1500ft²
HOSE STREAM DEMAND (gpm)	100

PROJECT: _____

GENERAL CONTRACTOR: _____

FIRE SPRINKLER CONTRACTOR: _____

DATE: _____

REVISIONS:

REV	DATE	COMMENTS
1		
2		
3		
4		
5		

APPROVED BY: _____ DATE: _____

DESIGNED BY: _____ DATE: _____

CHECKED BY: _____ DATE: _____

SHEET NO. 8 OF 8
SCALE: 1/8" = 1'-0"
CADD FILE NAME: _____

PROJECT DESCRIPTION:
SIXTH FLOOR PLAN - FIRE SPRINKLER LAYOUT

JOB NUMBER: _____

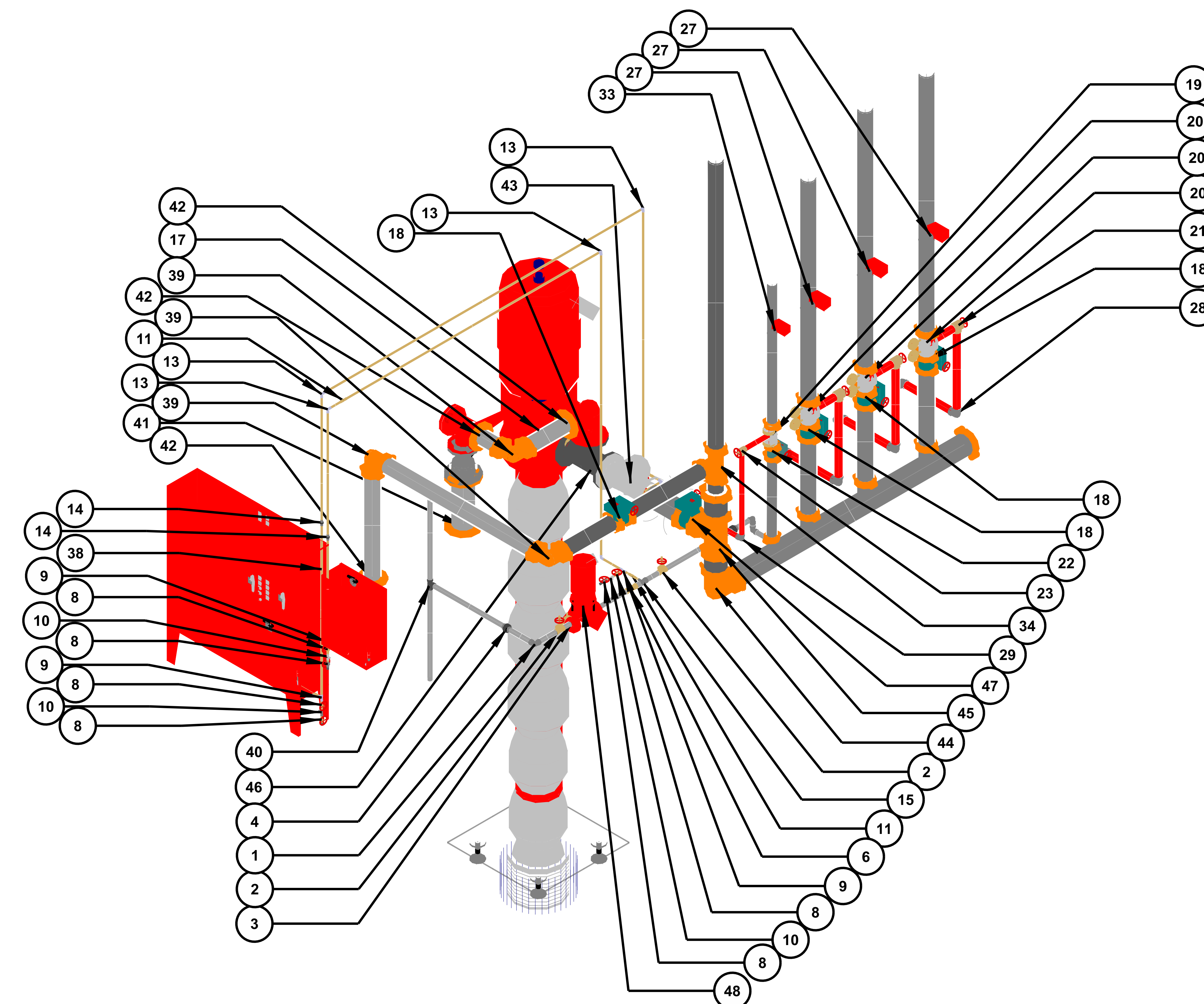
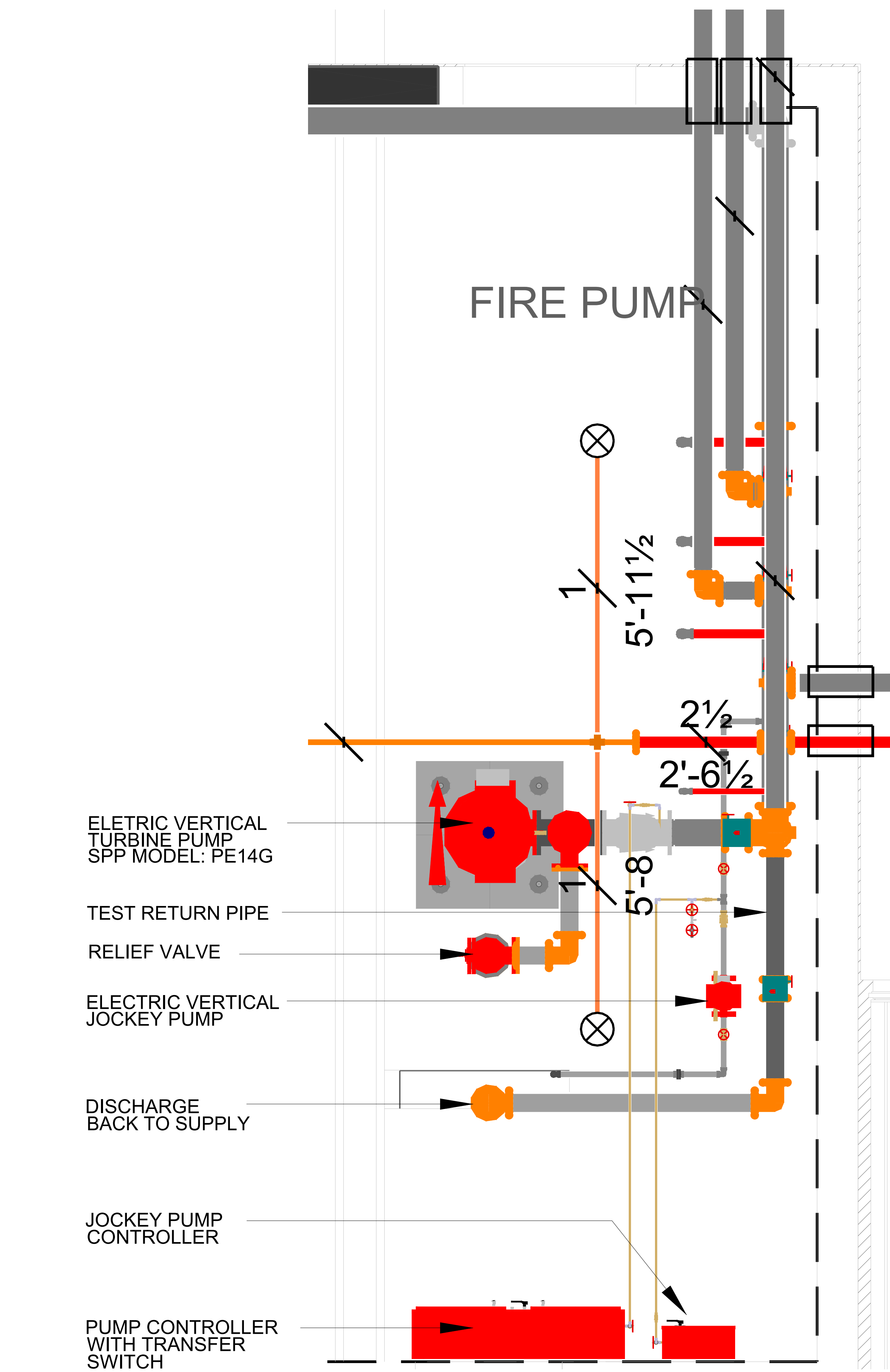
SHEET: SPR-07

EXPOSED PIPE:
GROOVED MAINS: PIPING 2" AND SMALLER TO BE SCHEDULE 40 BLACK PIPING UTILIZING GROOVED FITTINGS AND COUPLINGS.
PIPING 2.1/2" AND LARGER TO BE SCHEDULE 10 BLACK PIPING UTILIZING WELDED OUTLETS AND JOINED BY GROOVED FITTINGS AND COUPLINGS.
TRADED LINES:
SCHEDULE 40 BLACK PIPING UTILIZING STANDARD WIEGHT CAST IRON SCREWED FITTINGS.
CONCEALED PIPE: PIPING 3" AND SMALLER TO BE BLAZEMASTER CPVC PIPING, UTILIZING BLAZEMASTER FITTINGS AND COUPLINGS.

LEGEND	
	CONCEALED PENDANT SPRINKLER
	SIDEWALL SPRINKLER EXPOSED
	UPRIGHT SPRINKLER EXPOSED
	CALCULATION POINT
	CONCEALED PIPELINE
	EXPOSED PIPELINE
	UNDERGROUND PIPE
	REMOTE AREA BOUNDARY
	HYDRANT LANDING VALVE
	FIRE DEPARTMENT CONNECTION
	PIPE SLEEVE (DETAIL AT SPR-00)
	PIPE HANGER
	FIRE PUMP - VERTICAL TURBINE
	JOCKEY PUMP
	DISCHARGE CHECK VALVE
	BUTTERFLY VALVE
	RELIEF VALVE ELBOW
	RELIEF VALVE

FIRE PUMP ROOM - BOM

Key Note	Size	Description	Quantity
1	1 1/2"	Threaded 90° Elbow, GMI	3
2	1 1/2"	Gate Valve, OS&Y, T-T, 175lb	2
3	1 1/2" x 6"	Threaded Reducing Flange, CI	2
4	1 1/2"	150lb Union, CI	1
5	1 1/2"	150lb Union, GMI	1
6	1 1/2"	Valve, T-T Swing Check	1
7	1/2"	M-Threaded Square Plug, DI	4
8	1/2"	Globe Valve, T-T	8
9	1/2"	Threaded Straight Tee, SS	4
10	1/2" x 1/2" x 1/2"	Threaded Reducing Tee, GMI	4
11	1/2"	Valve, T-T Swing Check	3
12	1/2"	Threaded Cap, GMI	4
13	1/2"	Threaded, 90° Elbow, SS	8
14	1/2"	150lb Union, GMI	2
15	1 1/2" x 1 1/2" x 1/2"	Threaded Reducing Tee, GMI	1
16	1/2"	Gauge	5
17	12 x 6"	Pump, Vertical Turbine	1
18	4"	Butterfly Valve, G-G	4
19	2 1/2"	Swing Check Valve, G-G	1
20	4"	Swing Check Valve, G-G	3
21	2"	Angle Valve, T-T	3
22	2 1/2"	Butterfly Valve, G-G	1
23	1 1/2"	Angle Valve, T-T	1
24	2 1/2"	Rigid Coupling, Org, E Gasket	4
25	2"	M-Threaded Square Plug, CI	3
26	4"	Rigid Coupling, Org, E Gasket	25
27	4 x 2"	Waterflow Detector	3
28	2"	Threaded, 90° Elbow, CI	3
29	1 1/2"	Threaded, 90° Elbow, CI	1
30	1 1/2"	Threaded, 45° Elbow, CI	1
31	2"	Threaded, 45° Elbow, CI	3
32	1 1/2"	M-Threaded Square Plug, CI	1
33	2 1/2" x 1 1/2"	Waterflow Detector	1
34	4"	Grooved Tee, DI, Org	1
35	6"	Rigid Coupling, Org, E Gasket	7
36	1 1/2"	Threaded Cap, CI	1
37	6 x 4"	Rigid Coupling, Reducing, Org, E Gasket	1
38	1/2"	Threaded Cap, MI, Galv	1
39	4"	Grooved, 90° Elbow, DI	4
40	1 1/2"	Threaded Straight Tee, CI	1
41	6"	F-Grooved, Low Pressure Flange, DI	2
42	4"	F-Grooved, Low Pressure Flange, DI	3
43	6"	Swing Check Valve, F-F	1
44	6"	Grooved, 90° Elbow, DI	1
45	6"	Grooved Tee, DI	1
46	6"	Flanged Tee, CI	1
47	6"	Butterfly Valve, G-G	1
48		Jockey Pump	1



REV	DATE	COMMENTS
1		
2		
3		
4		
5		

PROJECT: _____
SHEET DESCRIPTION: FIRE PUMP ROOM - FIRE SPINKLER LAYOUT
GENERAL CONTRACTOR: _____
FIRE SPRINKLER CONTRACTOR: _____
JOB NUMBER: _____
SHEET: _____
SHEET 16 OF 16
NOT TO SCALE
CAD FILE NAME: _____